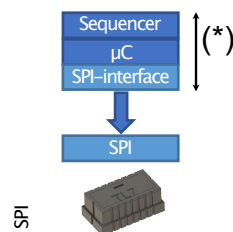
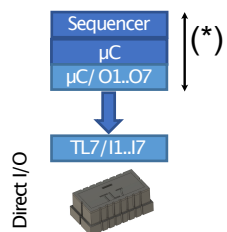


# Interfaces

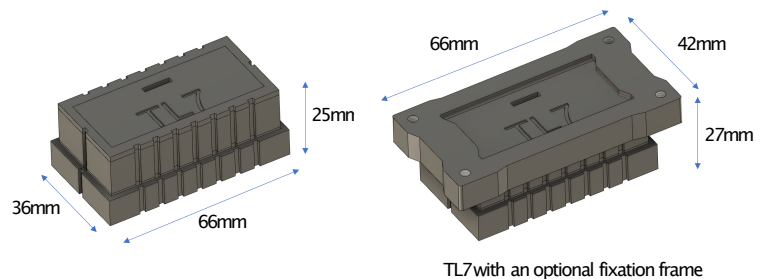
\* finger movements like swipe can be driven in a sequence/ choreography run by an external  $\mu C$  like e.g. Arduino or Raspberry PI or any other  $\mu C$  (\*) with a 5V interface

\* available interfaces:

- direct 5V input for each trigger
- SPI interface



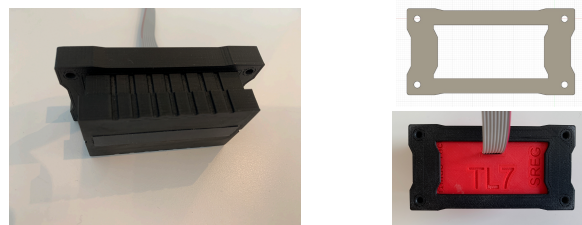
# Dimensions



TL7 with an optional fixation frame

# Fixation

\* fixation frame is optional available

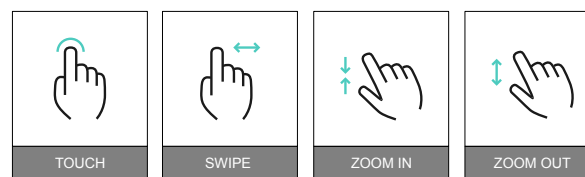


# TL7 7 Point Trigger for Capacitive Touch Panels

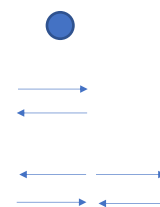
# Parameters

- \* TL7 is a single line 7 dot touch trigger for capacitive touch panels only
- \* Max. switching speed is for each element: 1ms
- \* can be driven directly from a 5V  $\mu C$  output or interface
  - U<sub>max</sub>= 5V, I<sub>min</sub> 10mA per single trigger
  - SPI interface available (optional)
- \* max switching speed 1ms per single trigger
- \* Each trigger can be controlled separately
- \* Housing is made of 3D printed ABS
- \* Operating temperature range
  - 20°C < T < +85°C
- \* Lifetime of each element typical: 10<sup>8</sup>

# Triggering Types

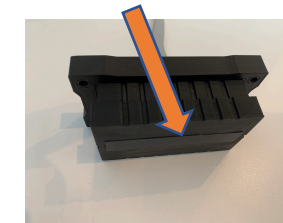


- \* single point activation
- \* linear movements inside 0-48mm possible
  - swipe
  - zoom in zoom out



# Active Area

- \* conductive rubber size: 10mm \* 48mm (active area)\*\*
- \* must be positioned directly on top of the surface of the device under test
- \* made for plane surfaces basically



trigger distance: 7mm



# Triggering

- \* max 7 trigger points can be used for actuation
- \* actuation choreography done by connected external  $\mu C$  (\*)
- \* intermediate point actuation for smoother finger movement possible



BRAND O-TECH

Cetin Barut, Poster TL7, V1, 06/21

(\*) is not included with the TL7 (\*\*) design changes without notification